



AIR FORCE ASSOCIATION'S

CYBERPATRIOT

NATIONAL YOUTH CYBER EDUCATION PROGRAM



National Youth Cyber Defense Competition Registration Report 2017-2018

www.uscyberpatriot.org

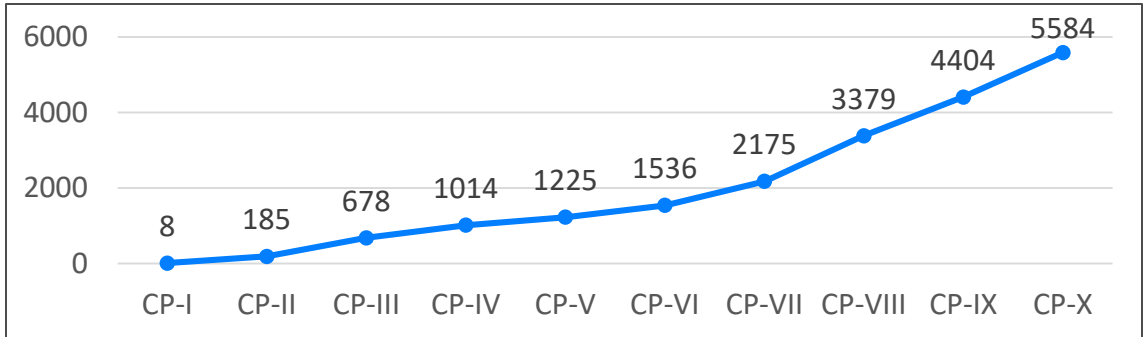


Table of Contents

Team Registration Information.....	2
1. TOTAL TEAM REGISTRATION.....	2
2. REGISTRATION BY LOCATION.....	2-4
i. Registration by region.....	3
ii. Registration by state.....	3-4
iii. Registration by Center of Excellence.....	5
3. REGISTRATION BY ORGANIZATION TYPE.....	6
i. Registration by division.....	6
ii. Open Division registration by category.....	6
iii. All Service Division registration by category.....	7
Competitor Registration Information.....	8
1. REGISTRATION BY GENDER	
2. REGISTRATION BY ETHNICITY	
3. REGISTRATION BY GRADE LEVEL	

Team Registration Information

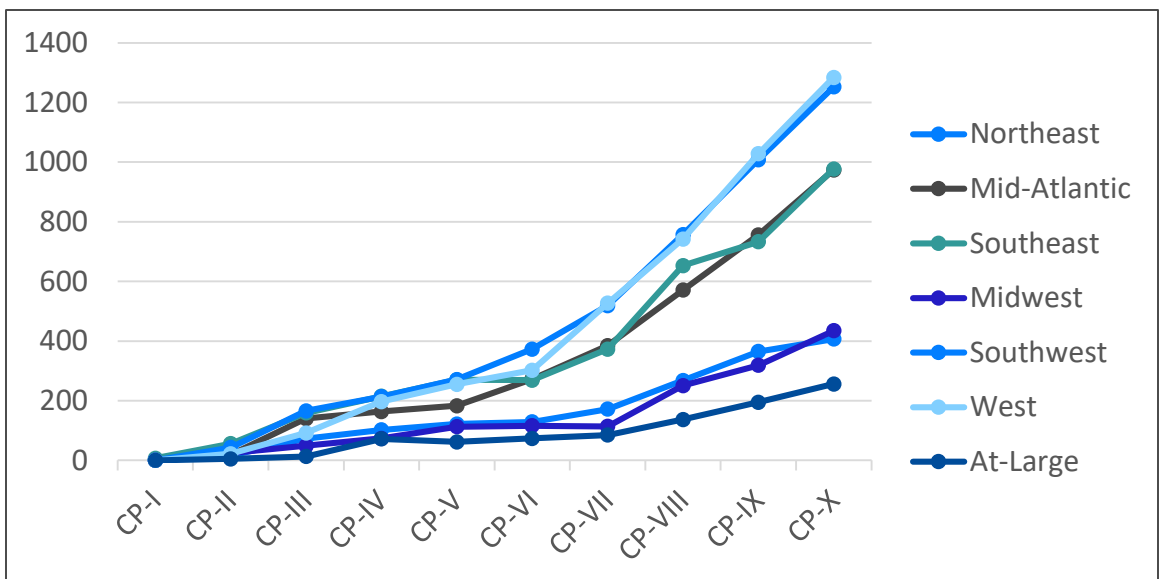
1. TOTAL TEAM REGISTRATION



2. REGISTRATION BY LOCATION

1. Registration by region

- **Northeast:** Connecticut, Maine, Massachusetts, New Hampshire, New Jersey, New York, Rhode Island, Vermont
- **Mid-Atlantic:** Delaware, Kentucky, Maryland, Ohio, Pennsylvania, Virginia, Washington, D.C., West Virginia
- **Southeast:** Alabama, Florida, Georgia, Louisiana, Mississippi, North Carolina, South Carolina, Tennessee
- **Midwest:** Illinois, Indiana, Iowa, Michigan, Minnesota, Nebraska, North Dakota, South Dakota, Wisconsin
- **Southwest:** Arizona, Arkansas, Colorado, Kansas, Missouri, New Mexico, Oklahoma, Texas
- **West:** California, Idaho, Montana, Nevada, Oregon, Utah, Washington, Wyoming
- **At-Large:** Alaska, Europe (AE), Pacific (AP), Canada, Hawaii, Puerto Rico, US Virgin Islands, Virtual Teams



i. Registration by region (cont'd.)

	CP-I	CP-II	CP-III	CP-IV	CP-V	CP-VI	CP-VII	CP-VIII	CP-IX	CP-X
Northeast	0	16	73	102	122	129	172	268	365	407
Mid-Atlantic	0	19	140	164	183	273	385	571	756	974
Southeast	7	56	159	215	270	269	373	653	733	977
Midwest	0	25	49	74	113	116	114	251	319	435
Southwest	0	43	166	214	271	373	519	757	1008	1252
West	0	22	92	197	255	302	527	742	1028	1284
At-Large	0	5	13	72	62	74	85	137	195	256

ii. Registration by state

	CP-I	CP-II	CP-III	CP-IV	CP-V	CP-VI	CP-VII		CP-VIII		CP-IX		CP-X	
	Teams	Teams	Teams	Teams	Teams	Teams	Teams	Annual Growth	Teams	Annual Growth	Teams	Annual Growth	Teams	Annual Growth
AB	0	0	0	0	0	1	0	-100.00%	0	0.00%	3	200.00%	3	0.0%
AE	0	0	0	0	2	5	12	140.00%	12	0.00%	11	-8.30%	13	18.2%
AK	0	3	3	7	4	5	10	100.00%	13	30.00%	16	23.10%	13	-18.8%
AL	0	6	7	23	25	26	51	96.20%	116	127.50%	118	1.70%	164	39.0%
APO	0	1	6	10	7	5	0	-80.00%	13	160.00%	15	15.40%	12	-20.0%
AR	0	6	7	5	7	9	14	55.60%	24	71.40%	31	29.20%	77	148.4%
AZ	0	6	15	17	19	24	43	79.20%	61	41.90%	70	14.80%	88	25.7%
BC	0	0	0	0	0	0	0	0.00%	0	0.00%	0	0.00%	1	N/A
CA	0	11	68	145	179	224	416	85.70%	577	38.70%	841	45.80%	1042	23.9%
CO	0	5	26	39	45	52	69	32.70%	93	34.80%	152	63.40%	173	13.8%
CT	0	1	2	2	10	10	14	40.00%	26	85.70%	33	26.90%	41	24.2%
DC	0	0	4	5	2	7	6	-14.30%	6	0.00%	10	66.70%	6	-40.0%
DE	0	0	6	8	5	5	11	120.00%	16	45.50%	17	6.30%	24	41.2%
FL	7	19	42	69	102	93	99	6.50%	198	100.00%	239	20.70%	255	6.7%
GA	0	5	20	16	29	18	25	38.90%	46	84.00%	74	60.90%	135	82.4%
HI	0	1	2	48	37	35	32	-8.60%	53	65.60%	64	20.80%	106	65.6%
IA	0	0	1	5	5	4	3	-25.00%	20	566.70%	6	-70.00%	24	300.0%
ID	0	0	1	4	4	4	4	0.00%	4	0.00%	7	75.00%	17	142.9%
IL	0	6	10	14	22	26	25	-3.80%	70	180.00%	87	24.30%	116	33.3%
IN	0	4	9	16	17	20	30	50.00%	56	86.70%	70	25.00%	73	4.3%
KS	0	2	7	2	4	8	15	87.50%	26	73.30%	41	57.70%	59	43.9%
KY	0	2	4	14	15	13	5	-61.50%	15	200.00%	22	46.70%	22	0.0%
LA	0	6	17	20	20	18	39	116.70%	45	15.40%	38	-15.60%	68	78.9%
MA	0	3	8	14	15	21	29	38.10%	12	-58.60%	16	33.30%	64	300.0%

ii. Registration by state (cont'd.)

	CP-I	CP-II	CP-III	CP-IV	CP-V	CP-VI	CP-VII		CP-VIII		CP-IX		CP-X	
	Teams	Teams	Teams	Teams	Teams	Teams	Teams	Annual Growth	Teams	Annual Growth	Teams	Annual Growth	Teams	Annual Growth
MB	0	0	0	5	9	16	22	37.50%	31	40.90%	43	38.70%	35	-18.6%
MD	0	2	36	36	39	54	77	42.60%	136	76.60%	195	43.40%	242	24.1%
ME	0	1	4	6	5	15	9	-40.00%	12	33.30%	16	33.30%	6	-62.5%
MI	0	2	6	10	15	19	12	-36.80%	31	158.30%	64	106.50%	113	76.6%
MN	0	2	4	7	12	18	13	-27.80%	25	92.30%	27	8.00%	32	18.5%
MO	0	3	8	10	11	22	25	13.60%	40	60.00%	60	50.00%	100	66.7%
MS	0	2	9	6	10	9	11	22.20%	5	-54.50%	12	140.00%	22	83.3%
MT	0	0	0	2	1	3	1	-66.70%	8	700.00%	12	50.00%	14	16.7%
NB	0	0	0	0	0	0	0	0.00%	0	0.00%	9	N/A	48	433.3%
NC	0	5	26	40	33	37	44	18.90%	88	100.00%	82	-6.80%	108	31.7%
ND	0	3	2	1	1	3	3	0.00%	2	-33.30%	7	250.00%	6	-14.3%
NE	0	2	5	7	7	15	16	6.70%	31	93.80%	37	19.40%	38	2.7%
NH	0	1	4	6	8	9	4	-55.60%	10	150.00%	18	80.00%	10	-44.4%
NJ	0	3	14	26	32	34	48	41.20%	74	54.20%	88	18.90%	117	33.0%
NM	0	0	5	9	18	29	40	37.90%	36	-10.00%	53	47.20%	66	24.5%
NS	0	0	0	0	0	0	0	0.00%	0	0.00%	0	0.00%	1	N/A
NV	0	2	5	14	17	11	8	-27.30%	22	175.00%	36	63.60%	59	63.9%
NY	0	8	19	29	21	31	46	48.40%	67	45.70%	96	43.30%	105	9.4%
OH	0	4	18	23	25	32	33	3.10%	71	115.20%	94	32.40%	105	11.7%
ON	0	0	0	0	0	0	0	0.00%	0	0.00%	4	N/A	3	-25.0%
OK	0	1	12	17	23	23	32	39.10%	52	62.50%	57	9.60%	69	21.1%
OR	0	2	3	5	4	11	17	54.50%	13	-23.50%	18	38.50%	14	-22.2%
PA	0	2	27	26	35	40	56	40.00%	91	62.50%	89	-2.20%	124	39.3%
PR	0	0	2	2	3	4	8	100.00%	12	50.00%	18	50.00%	7	-61.1%
QC	0	0	0	0	0	0	0	0.00%	0	0.00%	1	N/A	1	0.0%
RI	0	0	3	0	1	6	17	183.30%	32	88.20%	51	59.40%	57	11.8%
SC	0	7	21	21	30	35	52	48.60%	91	75.00%	100	9.90%	152	52.0%
SD	0	3	4	1	3	2	1	-100.00%	1	0.00%	4	300.00%	8	100.0%
TN	0	6	17	20	21	33	52	57.60%	64	23.10%	70	9.40%	73	4.3%
TX	0	20	86	115	144	206	281	36.40%	425	51.20%	544	28.00%	620	14.0%
UT	0	2	3	5	5	5	13	160.00%	30	130.80%	29	-3.30%	27	-6.9%
VA	0	8	40	50	61	119	188	58.00%	231	22.90%	307	32.90%	435	41.7%
VI	0	0	0	0	0	0	1	N/A	1	0.00%	6	500.00%	6	0.0%
VT	0	0	2	1	2	3	5	66.70%	10	100.00%	9	-10.00%	7	-22.2%
WA	0	5	12	20	43	40	66	65.00%	84	27.30%	79	-6.00%	101	27.8%
WI	0	1	10	7	5	9	11	22.20%	16	45.50%	17	6.30%	25	47.1%
WV	0	1	5	2	1	3	9	200.00%	5	-44.40%	22	340.00%	16	-27.3%
WY	0	0	0	2	2	4	2	-50.00%	4	100.00%	6	50.00%	10	66.7%
INT'L	0	0	0	0	0	0	0	0.00%	0	0.00%	5	N/A	7	40.0%

iii. Registration by Centers of Excellence*

a. CyberPatriot X registration by Centers of Excellence

Non-COE Teams	4342
Fairfax County Public Schools Teams	137
Huntsville City Schools	94
L.A. Unified School District Teams	190
Lee's Summit R-7 School District	42
Rose State College	39
San Antonio Teams	309
Spokane Teams	32
STEMspark East Tennessee Innovation Hub	21
SoCal CCCC	212
Canada CyberTitan	92
Elk Grove Unified School District	74

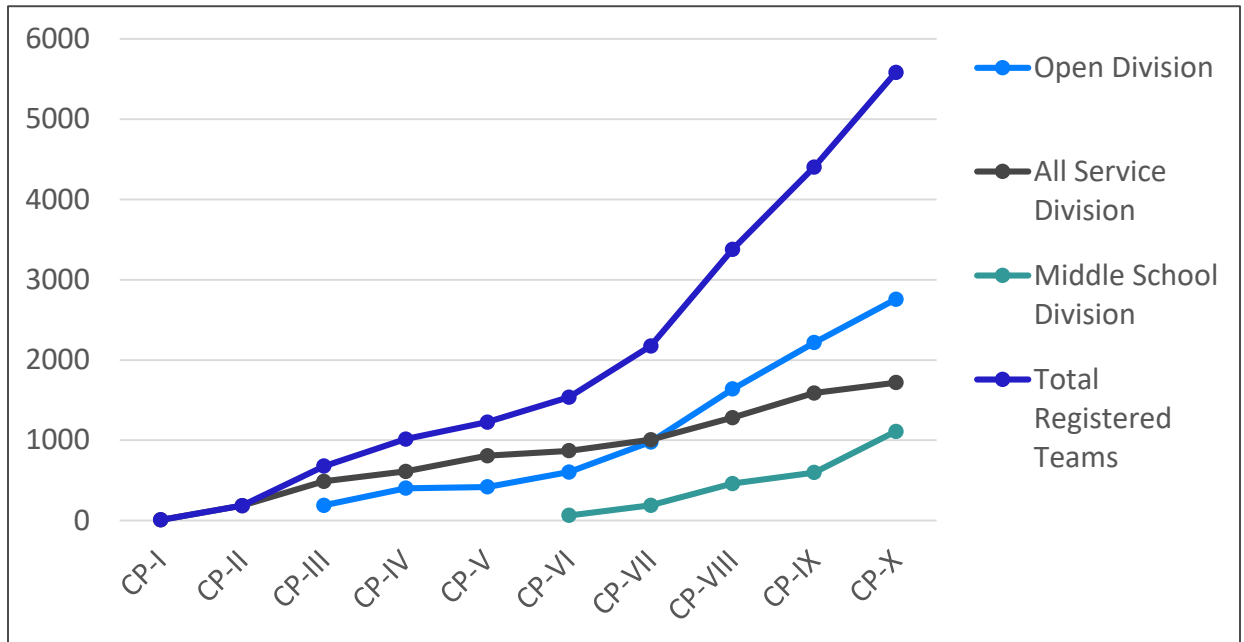
b. Historical COE registration data

	CP-IV	CP-V	CP-VI	CP-VII	CP-VIII	CP-IX	CP-X
Fairfax County Public Schools				37	50	107	137
Huntsville City Schools					44	56	94
L.A. Unified School District	49	55	99	145	143	173	190
Lee's Summit R-7 School District						21	42
Rose State College				22	30	36	39
City of San Antonio		55	85	113	198	258	309
Spokane Public Schools		33	15	25	26	25	32
STEMspark East Tennessee Innovation Hub					2	9	21
SoCal CCCC						77	212
Canada CyberTitan							92
Elk Grove Unified School District							74

* The CyberPatriot Center of Excellence (COE) designation is awarded to institutions or municipalities that excel in emphasizing cybersecurity and developing the workforce of tomorrow through use of CyberPatriot programs.

3. REGISTRATION BY ORGANIZATION TYPE

i. Registration by division



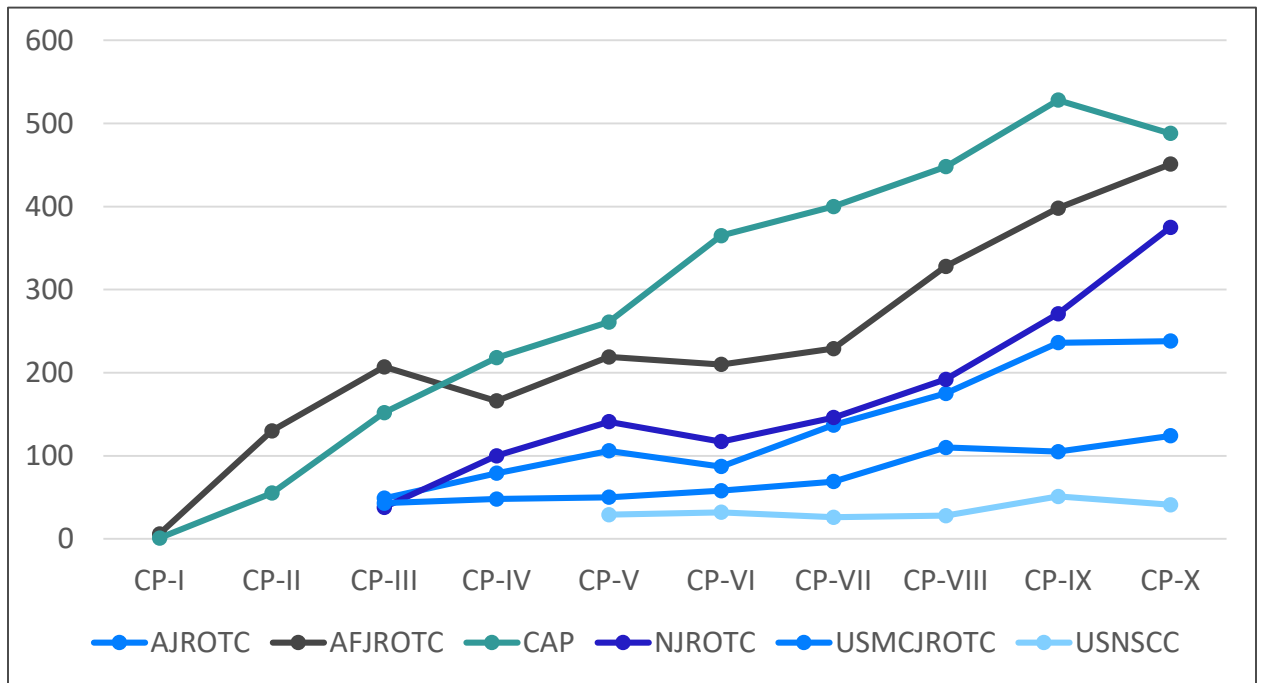
ii. Open Division registration by category*

*Note: Open Division registration by category data is only available for CP-V through CP-IX.

	CP-V	CP-VI	CP-VII	CP-VIII	CP-IX	CP-X
Charter/Magnet School	21	22	33	66	105	189
Home School	1	11	14	19	24	28
Private/Parochial School	33	55	90	175	237	267
Public High School	357	500	807	1315	1696	2157
Other Program	6	16	34	52	126	96
Boys and Girls Clubs				9	18	9
Scouting Unit				2	11	11

iii. All Service Division registration by category

	CP-I	CP-II	CP-III	CP-IV	CP-V	CP-VI	CP-VII	CP-VIII	CP-IX	CP-X
AJROTC			49	79	106	87	137	175	236	238
AFJROTC	6	130	207	166	219	210	229	328	398	451
CAP	1	55	152	218	261	365	400	448	528	488
NJROTC			38	100	141	117	146	192	271	375
USMCJROTC			43	48	50	58	69	110	105	124
USNSCC					29	32	26	28	51	



Competitor Registration Information*

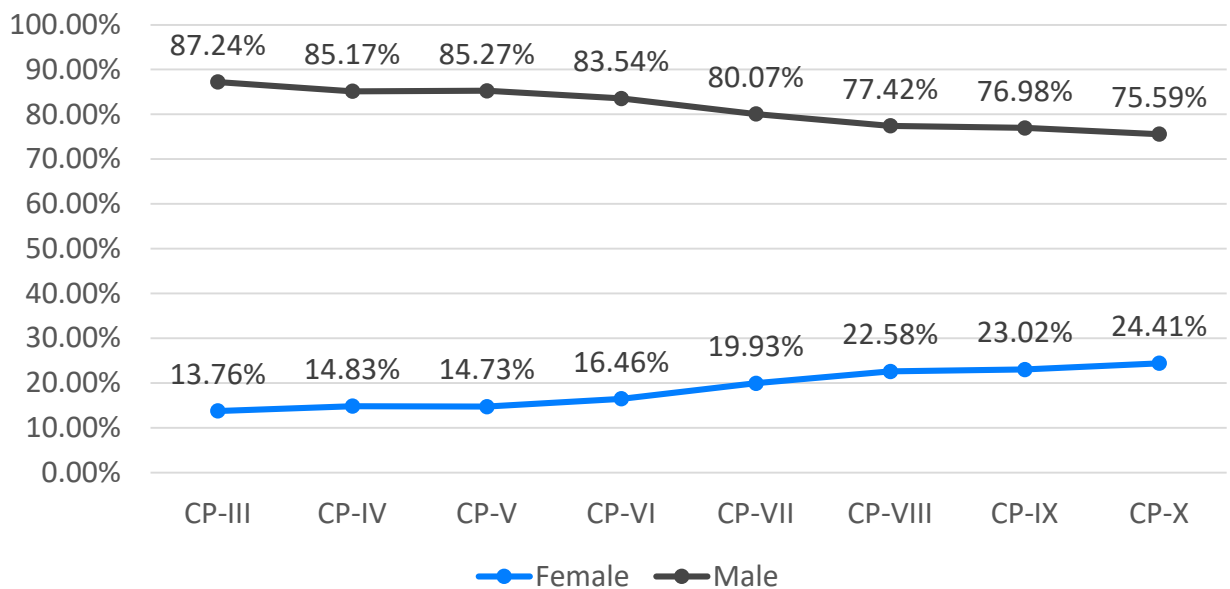
*Note: The criteria listed below are optional fields on the student registration form. Competitor data was not collected for CP-I and CP-II.

1. REGISTRATION BY GENDER

i. Number of students who self-reported

	CP-III	CP-IV	CP-V	CP-VI	CP-VII	CP-VIII	CP-IX	CP-X
Female	87	308	511	740	1238	2416	3286	3928
Male	595	1768	2958	3755	5158	8284	10983	12166

ii. Percentage of student self-responses



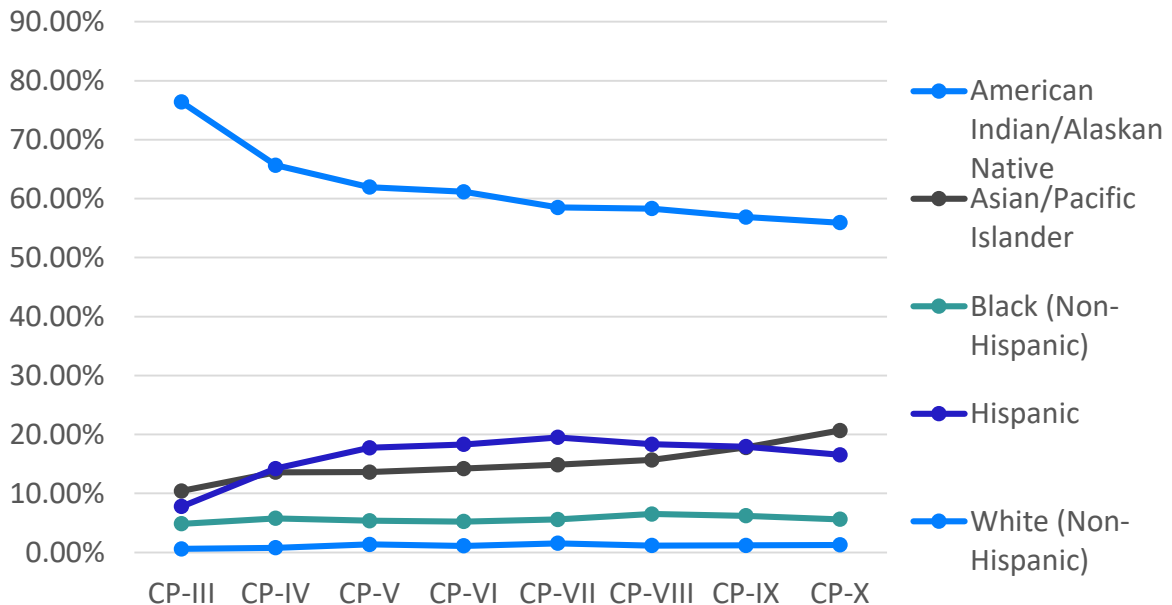
3. REGISTRATION BY ETHNICITY

i. Number of students who self-reported

	CP-III	CP-IV	CP-V	CP-VI	CP-VII	CP-VIII	CP-IX	CP-X
American Indian/Alaskan Native	4	16	47	50	92	115	158	189
Asian/Pacific Islander	71	282	472	638	890	1566	2361	3100
Black (Non-Hispanic)	33	120	186	234	334	651	824	840
Hispanic	53	295	615	821	1168	1833	2380	2481
White (Non-Hispanic)	521	1364	2149	2744	3502	5828	7546	8390

ii. Percentage of student-self responses

	CP-III	CP-IV	CP-V	CP-VI	CP-VII	CP-VIII	CP-IX	CP-X
American Indian/Alaskan Native	0.59%	0.77%	1.35%	1.11%	1.54%	1.15%	1.19%	1.26%
Asian/Pacific Islander	10.41%	13.58%	13.61%	14.22%	14.87%	15.67%	17.79%	20.67%
Black (Non-Hispanic)	4.84%	5.78%	5.36%	5.22%	5.58%	6.51%	6.21%	5.60%
Hispanic	7.77%	14.20%	17.73%	18.30%	19.51%	18.34%	17.94%	16.54%
White (Non-Hispanic)	76.39%	65.67%	61.95%	61.15%	58.50%	58.32%	56.87%	55.93%



2. REGISTRATION BY GRADE LEVEL

i. Number of students who self-reported

	CP-III	CP-IV	CP-V	CP-VI	CP-VII	CP-VIII	CP-IX	CP-X
6 th Grade				22	66	140	251	368
7 th Grade				60	210	452	527	740
8 th Grade				116	285	619	930	1300
9 th Grade	105	284	491	662	1084	1576	2203	2293
10 th Grade	155	437	717	915	1362	2356	2842	3198
11 th Grade	193	671	1008	1314	1697	2798	3712	3957
12 th Grade	209	671	1138	1356	1728	2812	3851	4363

ii. Percentage of student self-responses

