



AIR FORCE ASSOCIATION'S
CYBERPATRIOT
NATIONAL YOUTH CYBER EDUCATION PROGRAM

NATIONAL YOUTH CYBER DEFENSE COMPETITION
REGISTRATION REPORT
2018-2019

www.uscyberpatriot.org

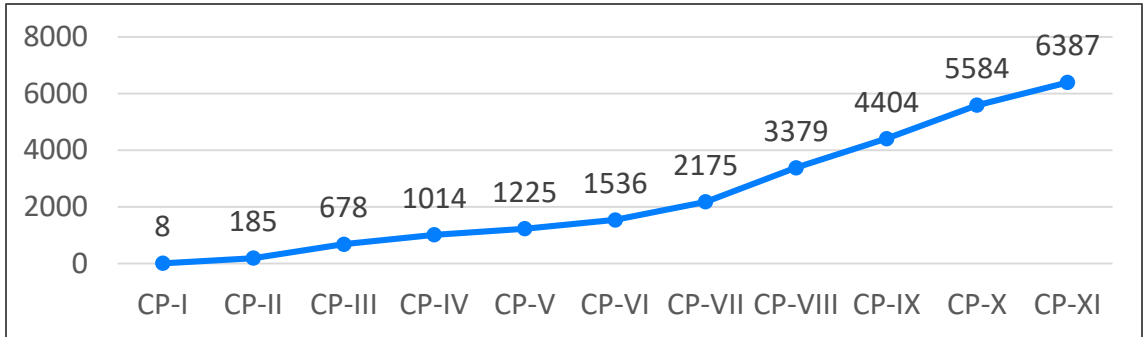


Table of Contents

Team Registration Information.....	2
1. TOTAL TEAM REGISTRATION.....	2
2. REGISTRATION BY LOCATION.....	2-4
i. Registration by region.....	3
ii. Registration by state.....	3-4
iii. Registration by Center of Excellence.....	5
3. REGISTRATION BY ORGANIZATION TYPE.....	6
i. Registration by division.....	6
ii. Open Division registration by category.....	6
iii. All Service Division registration by category.....	7
Competitor Registration Information.....	8-10
1. REGISTRATION BY GENDER	
2. REGISTRATION BY ETHNICITY	
3. REGISTRATION BY GRADE LEVEL	

Team Registration Information

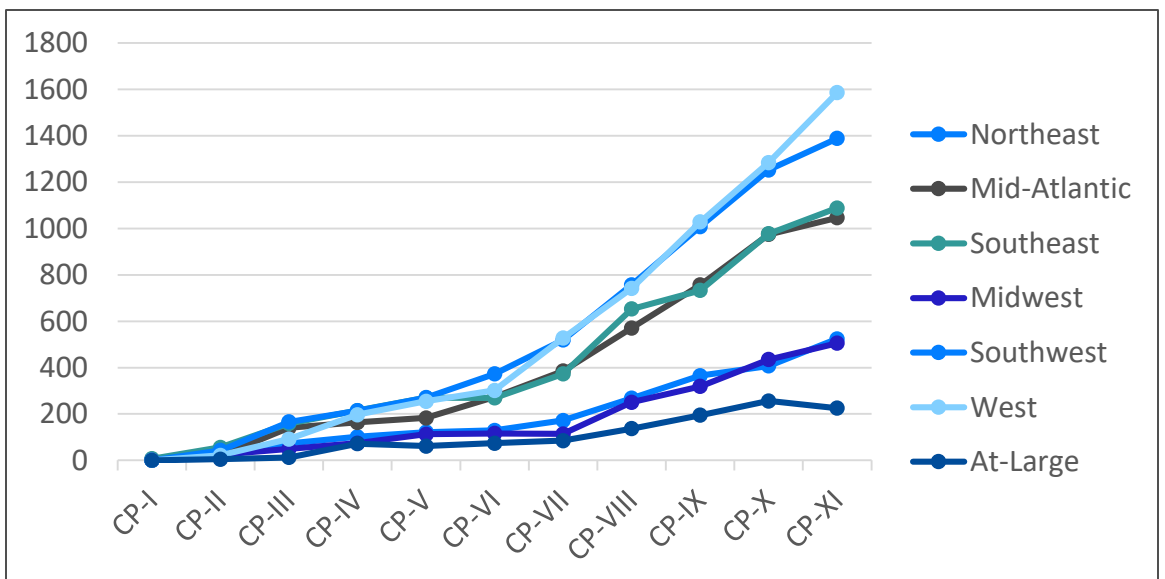
1. TOTAL TEAM REGISTRATION



2. REGISTRATION BY LOCATION

1. Registration by region

- **Northeast:** Connecticut, Maine, Massachusetts, New Hampshire, New Jersey, New York, Rhode Island, Vermont
- **Mid-Atlantic:** Delaware, Kentucky, Maryland, Ohio, Pennsylvania, Virginia, Washington, D.C., West Virginia
- **Southeast:** Alabama, Florida, Georgia, Louisiana, Mississippi, North Carolina, South Carolina, Tennessee
- **Midwest:** Illinois, Indiana, Iowa, Michigan, Minnesota, Nebraska, North Dakota, South Dakota, Wisconsin
- **Southwest:** Arizona, Arkansas, Colorado, Kansas, Missouri, New Mexico, Oklahoma, Texas
- **West:** California, Idaho, Montana, Nevada, Oregon, Utah, Washington, Wyoming
- **At-Large:** Alaska, Europe (AE), Pacific (AP), Canada, Hawaii, Puerto Rico, US Virgin Islands, Virtual Teams



i. Registration by region (cont'd.)

	CP-I	CP-II	CP-III	CP-IV	CP-V	CP-VI	CP-VII	CP-VIII	CP-IX	CP-X	CP-XI
Northeast	0	16	73	102	122	129	172	268	365	407	449
Mid-Atlantic	0	19	140	164	183	273	385	571	756	974	1033
Southeast	7	56	159	215	270	269	373	653	733	977	1078
Midwest	0	25	49	74	113	116	114	251	319	435	503
Southwest	0	43	166	214	271	373	519	757	1008	1252	1383
West	0	22	92	197	255	302	527	742	1028	1284	1577
At-Large	0	5	13	72	62	74	85	137	195	256	364

ii. Registration by state

	CP-I	CP-II	CP-III	CP-IV	CP-V	CP-VI	CP-VII	CP-VIII	CP-IX		CP-X		CP-XI	
	Teams	Teams	Teams	Teams	Teams	Teams	Teams	Teams	Teams	Annual Growth	Teams	Annual Growth	Teams	Annual Growth
AB	0	0	0	0	0	1	0	0	3	200.00%	3	0.00%	9	200%
AE	0	0	0	0	2	5	12	12	11	-8.30%	13	18.20%	7	-46%
AK	0	3	3	7	4	5	10	13	16	23.10%	13	-18.80%	13	0%
AL	0	6	7	23	25	26	51	116	118	1.70%	164	39.00%	177	9%
APO	0	1	6	10	7	5	0	13	15	15.40%	12	-20.00%	10	-17%
AR	0	6	7	5	7	9	14	24	31	29.20%	77	148.40%	77	-1%
AZ	0	6	15	17	19	24	43	61	70	14.80%	88	25.70%	94	8%
BC	0	0	0	0	0	0	0	0	0	0.00%	1	N/A	5	400%
CA	0	11	68	145	179	224	416	577	841	45.80%	1042	23.90%	1253	21%
CO	0	5	26	39	45	52	69	93	152	63.40%	173	13.80%	221	29%
CT	0	1	2	2	10	10	14	26	33	26.90%	41	24.20%	42	2%
DC	0	0	4	5	2	7	6	6	10	66.70%	6	-40.00%	9	50%
DE	0	0	6	8	5	5	11	16	17	6.30%	24	41.20%	28	17%
FL	7	19	42	69	102	93	99	198	239	20.70%	255	6.70%	319	27%
GA	0	5	20	16	29	18	25	46	74	60.90%	135	82.40%	174	31%
HI	0	1	2	48	37	35	32	53	64	20.80%	106	65.60%	112	7%
IA	0	0	1	5	5	4	3	20	6	-70.00%	24	300.00%	27	13%
ID	0	0	1	4	4	4	4	4	7	75.00%	17	142.90%	17	6%
IL	0	6	10	14	22	26	25	70	87	24.30%	116	33.30%	128	10%
IN	0	4	9	16	17	20	30	56	70	25.00%	73	4.30%	77	4%
KS	0	2	7	2	4	8	15	26	41	57.70%	59	43.90%	43	-25%
KY	0	2	4	14	15	13	5	15	22	46.70%	22	0.00%	31	50%
LA	0	6	17	20	20	18	39	45	38	-15.60%	68	78.90%	61	-10%
MA	0	3	8	14	15	21	29	12	16	33.30%	64	300.00%	64	0%

ii. Registration by state (cont'd.)

	CP-I	CP-II	CP-III	CP-IV	CP-V	CP-VI	CP-VII	CP-VIII	CP-IX		CP-X		CP-XI	
	Teams	Teams	Teams	Teams	Teams	Teams	Teams	Teams	Teams	Annual Growth	Teams	Annual Growth	Teams	Annual Growth
MB	0	0	0	5	9	16	22	31	43	38.70%	35	-18.60%	32	-9%
MD	0	2	36	36	39	54	77	136	195	43.40%	242	24.10%	273	13%
ME	0	1	4	6	5	15	9	12	16	33.30%	6	-62.50%	7	33%
MI	0	2	6	10	15	19	12	31	64	106.50%	113	76.60%	142	22%
MN	0	2	4	7	12	18	13	25	27	8.00%	32	18.50%	31	-3%
MO	0	3	8	10	11	22	25	40	60	50.00%	100	66.70%	96	-1%
MS	0	2	9	6	10	9	11	5	12	140.00%	22	83.30%	24	12%
MT	0	0	0	2	1	3	1	8	12	50.00%	14	16.70%	16	13%
NB	0	0	0	0	0	0	0	0	9	N/A	48	433.30%	126	62%
NC	0	5	26	40	33	37	44	88	82	-6.80%	108	31.70%	102	-6%
ND	0	3	2	1	1	3	3	2	7	250.00%	6	-14.30%	9	33%
NE	0	2	5	7	7	15	16	31	37	19.40%	38	2.70%	31	-23%
NH	0	1	4	6	8	9	4	10	18	80.00%	10	-44.40%	15	33%
NJ	0	3	14	26	32	34	48	74	88	18.90%	117	33.00%	141	17%
NM	0	0	5	9	18	29	40	36	53	47.20%	66	24.50%	67	3%
NS	0	0	0	0	0	0	0	0	0	0.00%	1	N/A	0	0%
NV	0	2	5	14	17	11	8	22	36	63.60%	59	63.90%	109	46%
NY	0	8	19	29	21	31	46	67	96	43.30%	105	9.40%	90	-17%
OH	0	4	18	23	25	32	33	71	94	32.40%	105	11.70%	97	-8%
ON	0	0	0	0	0	0	0	0	4	N/A	3	-25.00%	17	83%
OK	0	1	12	17	23	23	32	52	57	9.60%	69	21.10%	90	23%
OR	0	2	3	5	4	11	17	13	18	38.50%	14	-22.20%	17	18%
PA	0	2	27	26	35	40	56	91	89	-2.20%	124	39.30%	113	-11%
PR	0	0	2	2	3	4	8	12	18	50.00%	7	-61.10%	8	13%
QC	0	0	0	0	0	0	0	0	1	N/A	1	0.00%	0	0%
RI	0	0	3	0	1	6	17	32	51	59.40%	57	11.80%	70	19%
SC	0	7	21	21	30	35	52	91	100	9.90%	152	52.00%	136	-12%
SD	0	3	4	1	3	2	1	1	4	300.00%	8	100.00%	6	-33%
TN	0	6	17	20	21	33	52	64	70	9.40%	73	4.30%	85	14%
TX	0	20	86	115	144	206	281	425	544	28.00%	620	14.00%	695	11%
UT	0	2	3	5	5	5	13	30	29	-3.30%	27	-6.90%	35	23%
VA	0	8	40	50	61	119	188	231	307	32.90%	435	41.70%	465	8%
VI	0	0	0	0	0	0	1	1	6	500.00%	6	0.00%	1	-500%
VT	0	0	2	1	2	3	5	10	9	-10.00%	7	-22.20%	20	65%
WA	0	5	12	20	43	40	66	84	79	-6.00%	101	27.80%	117	14%
WI	0	1	10	7	5	9	11	16	17	6.30%	25	47.10%	52	53%
WV	0	1	5	2	1	3	9	5	22	340.00%	16	-27.30%	17	6%
WY	0	0	0	2	2	4	2	4	6	50.00%	10	66.70%	13	23%
INT'L	0	0	0	0	0	0	0	0	5	N/A	7	40.00%	40	72%

iii. Registration by Centers of Excellence*

a. CyberPatriot XI registration by Centers of Excellence

Los Angeles Unified School District (LAUSD)	198
City of San Antonio, TX (SATX)	317
Spokane Public Schools (SPS)	36
Rose State College, OK (ROSE)	38
Fairfax County Public Schools (FCPS)	136
STEMspark East TN Innovation Hub (ETN)	9
Huntsville City Schools (HCS)	67
Lee's Summit R-7 School District (LSR7)	35
SoCal Cybersecurity Comm College Consortium (SoCalCCCC)	310
Canada CyberTitan (TITAN)	189
Elk Grove Unified School District (EGUSD)	105
Red Bank Regional HS District (RBR)	10
Midwest CISSE Chapter (MCISSE)	109
Securing Our eCity Foundation (SOeC)	83
Bay Area Community College Consortium (BACCC)	56

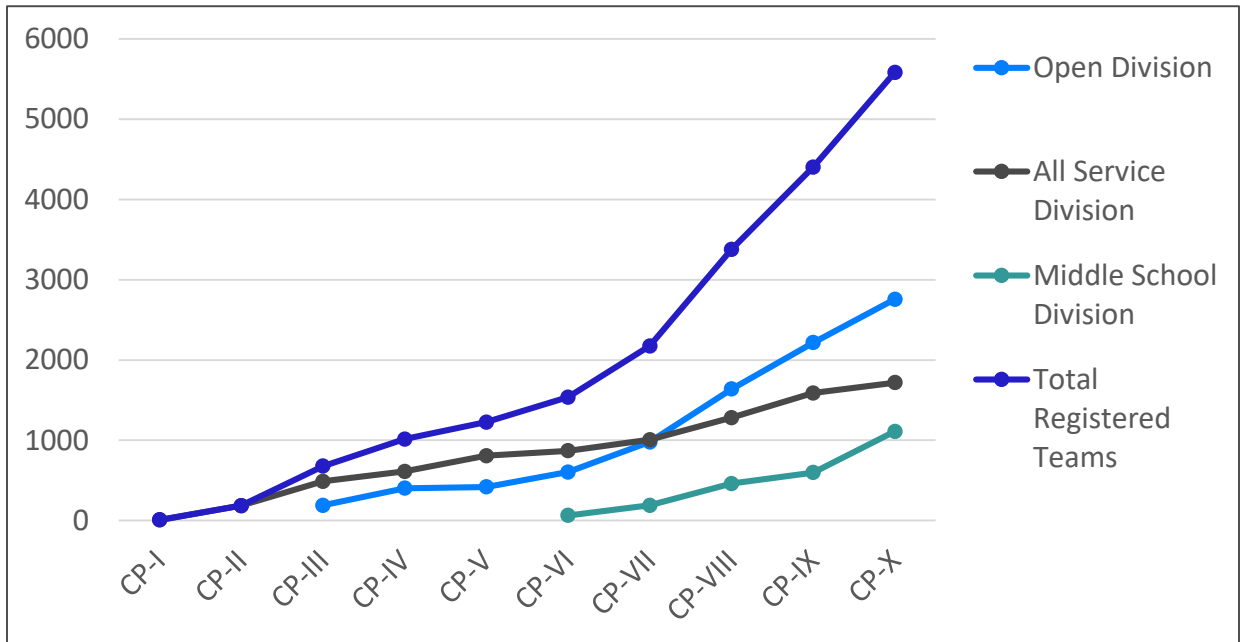
b. Historical COE registration data

	CP-IV	CP-V	CP-VI	CP-VII	CP-VIII	CP-IX	CP-X
Fairfax County Public Schools				37	50	107	137
Huntsville City Schools					44	56	94
L.A. Unified School District	49	55	99	145	143	173	190
Lee's Summit R-7 School District						21	42
Rose State College				22	30	36	39
City of San Antonio		55	85	113	198	258	309
Spokane Public Schools		33	15	25	26	25	32
STEMspark East Tennessee Innovation Hub					2	9	21
SoCal CCCC						77	212
Canada CyberTitan							92
Elk Grove Unified School District							74

* The CyberPatriot Center of Excellence (COE) designation is awarded to institutions or municipalities that excel in emphasizing cybersecurity and developing the workforce of tomorrow through use of CyberPatriot programs.

3. REGISTRATION BY ORGANIZATION TYPE

i. Registration by division



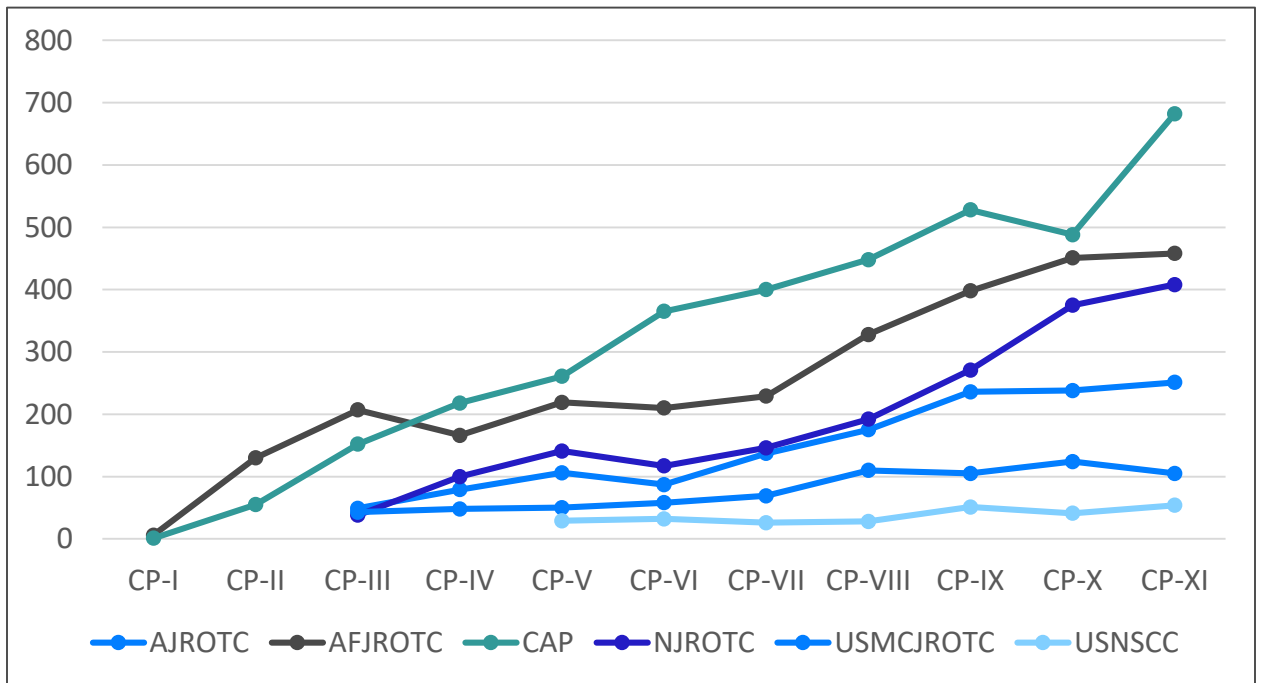
ii. Open Division registration by category*

*Note: Open Division registration by category data is only available for CP-V through CP-IX.

	CP-V	CP-VI	CP-VII	CP-VIII	CP-IX	CP-X	CP-XI
Charter/Magnet School	21	22	33	66	105	189	223
Home School	1	11	14	19	24	28	32
Private/Parochial School	33	55	90	175	237	267	302
Public High School	357	500	807	1315	1696	2157	2595
Other Program	6	16	34	52	126	96	123
Boys and Girls Clubs				9	18	9	9
Scouting Unit				2	11	11	9

iii. All Service Division registration by category

	CP-I	CP-II	CP-III	CP-IV	CP-V	CP-VI	CP-VII	CP-VIII	CP-IX	CP-X	CP-XI
AJROTC			49	79	106	87	137	175	236	238	257
AFJROTC	6	130	207	166	219	210	229	328	398	451	475
CAP	1	55	152	218	261	365	400	448	528	488	530
NJROTC			38	100	141	117	146	192	271	375	435
USMCJROTC			43	48	50	58	69	110	105	124	108
USNSCC					29	32	26	28	51		46



Competitor Registration Information*

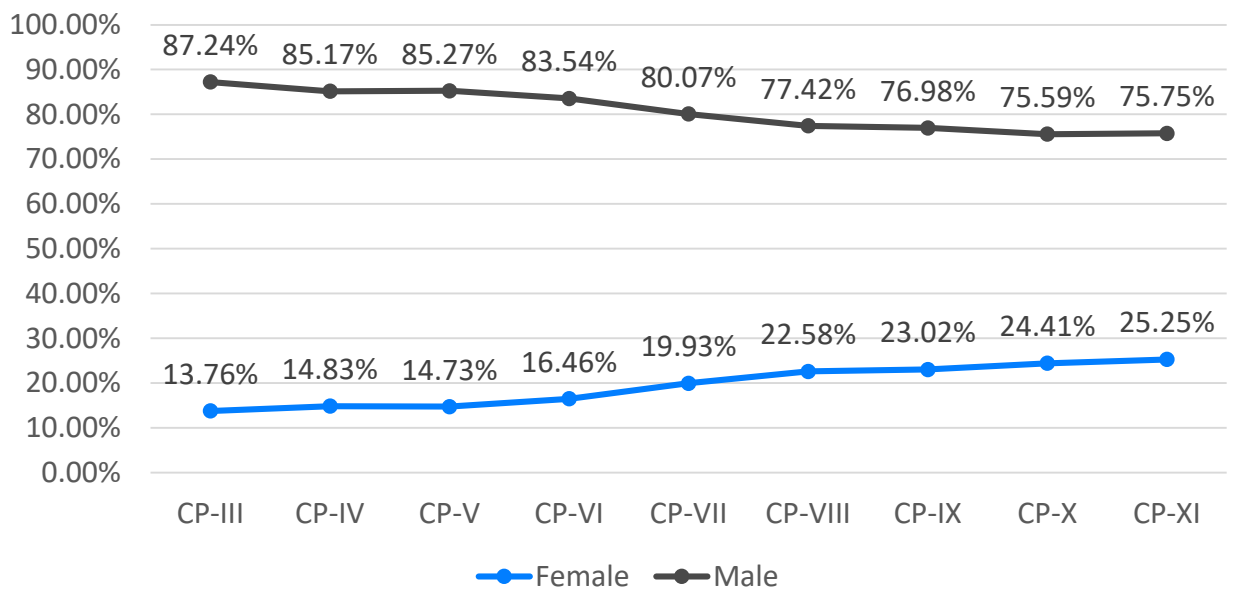
*Note: The criteria listed below are optional fields on the student registration form. Competitor data was not collected for CP-I and CP-II.

1. REGISTRATION BY GENDER

i. Number of students who self-reported

	CP-III	CP-IV	CP-V	CP-VI	CP-VII	CP-VIII	CP-IX	CP-X	CP-XI
Female	87	308	511	740	1238	2416	3286	3928	4402
Male	595	1768	2958	3755	5158	8284	10983	12166	13031

ii. Percentage of student self-responses



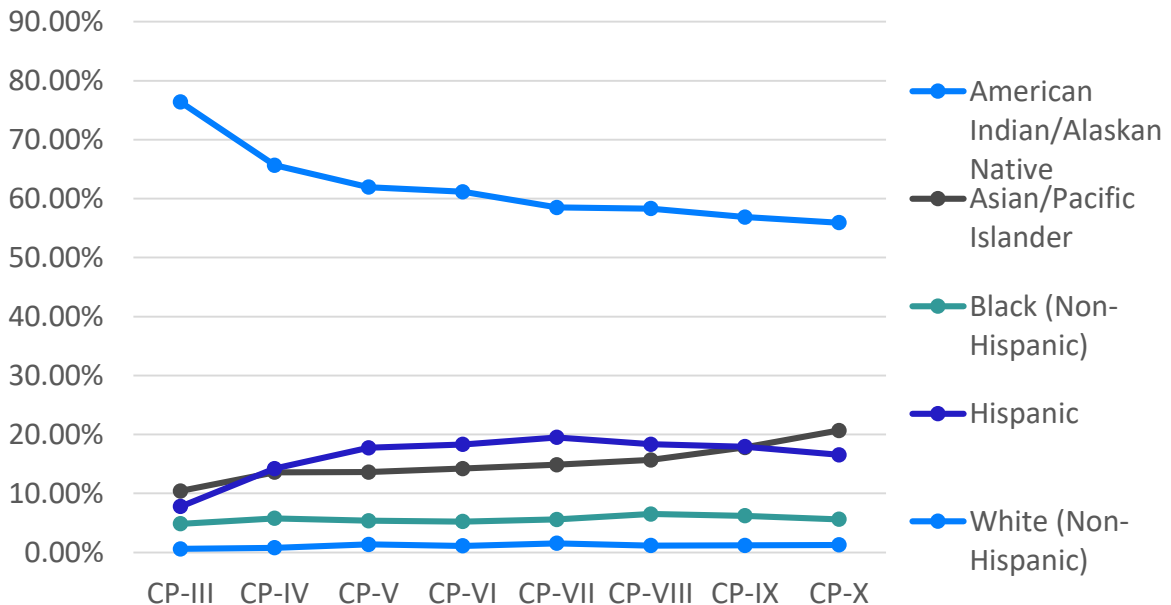
3. REGISTRATION BY ETHNICITY

i. Number of students who self-reported

	CP-III	CP-IV	CP-V	CP-VI	CP-VII	CP-VIII	CP-IX	CP-X	CP-XI
American Indian/Alaskan Native	4	16	47	50	92	115	158	189	199
Asian/Pacific Islander	71	282	472	638	890	1566	2361	3100	3627
Black (Non-Hispanic)	33	120	186	234	334	651	824	840	968
Hispanic	53	295	615	821	1168	1833	2380	2481	2596
White (Non-Hispanic)	521	1364	2149	2744	3502	5828	7546	8390	8856

ii. Percentage of student-self responses

	CP-III	CP-IV	CP-V	CP-VI	CP-VII	CP-VIII	CP-IX	CP-X	CP-XI
American Indian/Alaskan Native	0.59%	0.77%	1.35%	1.11%	1.54%	1.15%	1.19%	1.26%	1.22%
Asian/Pacific Islander	10.41%	13.58%	13.61%	14.22%	14.87%	15.67%	17.79%	20.67%	22.32%
Black (Non-Hispanic)	4.84%	5.78%	5.36%	5.22%	5.58%	6.51%	6.21%	5.60%	5.96%
Hispanic	7.77%	14.20%	17.73%	18.30%	19.51%	18.34%	17.94%	16.54%	15.98%
White (Non-Hispanic)	76.39%	65.67%	61.95%	61.15%	58.50%	58.32%	56.87%	55.93%	54.51%



2. REGISTRATION BY GRADE LEVEL

i. Number of students who self-reported

	CP-III	CP-IV	CP-V	CP-VI	CP-VII	CP-VIII	CP-IX	CP-X	CP-XI
6 th Grade				22	66	140	251	368	389
7 th Grade				60	210	452	527	740	1006
8 th Grade				116	285	619	930	1300	1372
9 th Grade	105	284	491	662	1084	1576	2203	2293	2486
10 th Grade	155	437	717	915	1362	2356	2842	3198	3420
11 th Grade	193	671	1008	1314	1697	2798	3712	3957	4243
12 th Grade	209	671	1138	1356	1728	2812	3851	4363	4605

ii. Percentage of student self-responses

